

Rousay, Egilsay & Wyre REVIEW

May 2011

E-mail
Edition

REW Community Garden

Rousay School staff are keen to get the garden sited at the school up and running, as they can't wait to start growing things with the children!

Everything is now here and is ready to be assembled. The first phase is to assemble the raised beds, starting the week beginning 9th May.

Can you lend a hand? If so, please contact the school - 821 226. All offers of help greatly appreciated.

Thank you.



What's On at a Glance

May 2011

Tuesday 3rd.

⇒ Taversoe Inn QUIZition, 8pm

Saturday 7th.

⇒ Bishop Visit/Service, St. Mary's Church, Westness, 11.30am

Sunday 8th.

⇒ Church Service, Church Centre, 11.30am
⇒ 'Up' Film, School, 3pm

Tuesday 10th.

⇒ Rousay SWRI, School, 8pm

Saturday 14th.

⇒ Open Day for the Excavations at Ha'Breck, Wyre
⇒ 'The King's Speech' Film, School, 8pm

Sunday 15th.

⇒ Church Service, Church Centre, 11.30am

Sunday 22nd.

⇒ Treasure Hunt, starting from the Pier Restaurant, clues given at 2.30pm, for 3pm start
⇒ Fish & Chips, Pier Restaurant, 5-7pm

Thursday 26th.

⇒ Mobile Library visits Rousay, Egilsay and Wyre

Friday 27th.

⇒ Cruise Liner ('The Spirit of Adventure') Visit, 7am - 5.30pm

Sunday 29th.

⇒ Rousay Dinxwhacky Boom Band, Church Centre, 2-5pm

Come and join the
ROUSAY DINXWHACKY BOOM BAND
FOR THE MUSICALLY CHALLENGED

FUN FOR ALL AGES AND ABILITIES

SUNDAY, 29 MAY
2.00 – 5.00 pm

The Church Centre

Learn to play a variety of tunes on Boomwhackers. These are coloured, tuned lengths of tubing which produce notes when lightly knocked against knees, feet, tables or any surface that is rigid!! Players do not need to be able to read music as each colour represents a different note. Any kind of music can be played on them from nursery rhymes to Bizet. Just go to YouTube and search to see how versatile they can be and how much fun they are to play!



CHRISTIAN AID WEEK
We believe in life before death

Money raised will go to Christian Aid, which is not a missionary charity but works alongside local people throughout the world to help solve their local problems. For every £1 given, 98p goes to the needy as compared to 20p from the National Lottery. Although we are going through a difficult economic situation at present, we have schooling for our children, a health service that is free at source, clean water coming from our taps, a stable government and legal system, temperate weather and little danger of natural disasters. We are so fortunate. Let us not forget those who, like us, just want to feed, clothe and educate their children but are unable to do so because of events beyond their control.



ROUSAY S.W.R.I.

Our next meeting is on Tuesday, 10 May 2011
@ 8pm in the Community School.

Our guest speaker for the night is
Mr. Barry O'Dowd who will be talking about his 'Trip Around India.'

This is an open meeting and all welcome.

Competitions

Cushion cover and any craft.
Garden photo.

Please bring any plants and/or seedlings
that you have to sell and raise funds for the group.

Refreshments to follow.

WANTED

Land on the island.

Contact Sean at Quoys (821 407)



Cycling Proficiency

P6/7pupils will be taking part in cycle training,
under the leadership of Joseph Hewes, on the
roads around the school on Wednesday
afternoons, starting 4th May, for 6 to 8 weeks.

Motorists are requested to drive with caution
within the vicinity of the school.

FILMS

There will be a showing of 'Up' in the green room on Sunday 8th May at 3.00p.m.
All welcome.

School age children can be left unattended.



'The King's Speech' will be shown in the green room on Saturday 14th May at 8.00p.m. (cert. 12).

Rousay Healthy Living Centre

Supervised Opening Hours

Mon 7pm-9pm
Tue 7pm-9pm
Wed 5pm-7pm
Thur 7pm-9pm
Sat 4pm-5pm

Buddy System 7am-5:30pm weekdays school term and during Badminton (for times please check with Mark Hull)

Due to Staff shortages there may be some disruption to supervised sessions over the next 6 weeks. We will make every effort to ensure the sessions are staffed as advertised but some cancellations may be unavoidable. We apologise for any inconvenience and please feel free to contact Jo Inkster on 821200 or at the gym on 821443 if you have any questions. Thank you.



Treasure Hunt and Fish & Chips

Sunday 22 May

Clues will be given at the Pier Restaurant at 2.30pm (earlier for bikes).
3pm start. Must be back by 5pm, or be disqualified.
£5 per car

Fish & Chips, 5-7pm
£7 per adult; £4 Primary (older); £2 Primary (younger)
Bookings must be made by 3pm, Sunday.

In aid of RNLI

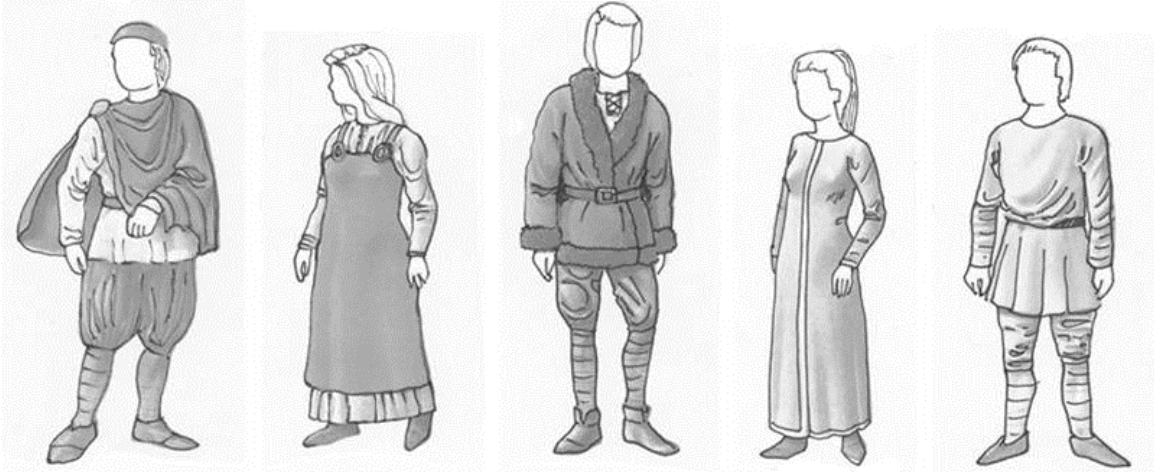
ADVANCE NOTICE FOR VIKING FANCY DRESS COSTUMES

for the

STORMING OF WYRE

We are in preparation for this big event taking place in Wyre on July 16th and would like as many folk as possible to enter into the spirit of battle & turn up on the day wearing Viking style outfits. To encourage a good effort we will be handing out prizes for the best dressed Vikings (men & women, boys & girls). Other activities will include: Viking Treasure Hunts; story-telling; Viking re-enactments; competitive games of 'skill, strength & endurance'; feasting, dancing & general merriment. (Full programme to be announced at a later date.)

To assist anyone wanting to get involved we have put together some descriptions & images of what Vikings actually wore and carried with them but, of course, feel free to interpret and improvise.



General Style – Both men & women liked bright colours (though the poor or slaves wore mostly sack-cloth browns) and both sexes wore a lot of jewellery so they would have looked pretty flashy to us (think 'Bling'!).

Men & Boys – Loose fitting long shirts/tunics belted at the waist. Comfortable trousers, sometimes knee-length or strapped from knee to ankle. Rich men might have a tailored jacket trimmed with fur or sheepskin or, in cold weather, a cloak of thick wool or fur fastened at the shoulder. In the later Viking age, some warriors might have worn a chain mail tunic. (When going into battle, the infamous 'Berserkers' wore nothing at all under their bearskins!)

They had leather shoes/boots & belts from which they could hang a knife or sword. Helmets were made of metal (though leather caps were more common, even in battle) and they carried a large shield (1m diam) made of wood covered in leather or painted with simple patterns with a hemispherical metal boss in the centre of its outer surface.

Hair could be shoulder-length or longer, chins could be clean-shaven or bearded or if you're capable of growing a big droopy moustache, then go for it!



Women & Girls – Loose ankle-length pleated tunics made of linen under a closer fitting calf-length woollen pinafore dress pinned at the shoulder straps by 2 oval brooches which were sometimes connected together by a string of beads. In winter, a thick woollen overdress might be trimmed with a contrasting colour or else, a thick wool or fur cloak for the rich or a shawl for the poor. If they wore a belt it might have keys or other domestic items (eg. a comb) hanging from it.

Hair might be worn loose, plaited or tied in a knot and they could wear a headband adorned with ribbon hanging down the back or a simple silk cap tied under the chin with ribbon.

Storming of Wyre continued...

Jewellery - Made of copper, lead, bronze, silver, gold, coloured glass, amber and jet (black).

Men wore flat circular brooches to fasten their cloak along with a pendant necklace (perhaps shaped like Thor's Hammer) or a metal neck ring plus many arm & finger rings.

The most common brooches for women were oval shaped and attached to the straps of their pinafore. They wore even more arm & finger rings than the men plus amber, jet or coloured glass bead necklaces, gold or silver neck rings and metal earrings. They also used bone pins or metal ring pins to fasten their clothing.

Weapons – Such an important piece of attire that it was expected by law to own and carry them in later Viking times. The illustration shows a warrior equipped with his axe, shield and knife. The 1m long swords and long-handled axes were usually the property of richer men whilst the most commonly used weapon was actually a spear (an iron blade on a wooden shaft 2-3m long) which was used for thrusting or throwing. Spear blades had a wide variety of shapes from broad leaf to long spike.



FOR ANY FURTHER INFO CONTACT RACHAEL HARRIS : 821 367 OR rharris@btinternet.com

FOR SALE



Large stone distressed boot planter

Measures over 2.5ft x 1.5ft in dimension.

Needs two people to carry
as very, very heavy.

More than one available.

These can be painted to desired taste.

£29.99 each.



Ornate stone bird bath/table

2ft tall. Really heavy.

Comes in 2 parts.

Features owl in a tree,
feeding 2 chicks with a field mouse.

These can be painted to desired taste.

£45.00 each.

Contact 821 424 (Trish)

Rousay, Egilsay & Wyre Development Trust



Monthly Update

As we again approach the AGM, April has been simultaneously encouraging and frustrating. There has been significant and visible progress on some fronts but frustrating delays on others.

AGM

The Annual General Meeting of the Trust is to be held at 10.15 a.m. on Saturday 18th June. As well as the usual election of directors, etc., **this meeting will provide members with an opportunity to comment on the draft of the Trust's revised Development Plan.** We are just completing an internal review of this and the new draft will be circulated to all members with their official notification of the meeting.

Allotments

After significant delays, good progress has been made with the allotments and we are able to proceed with membership of the allotment association, leasing of plots etc. prior to a, hopefully speedy, covering and completion of the poly-tunnel [Details are provided on a separate page of this *Review*.]

School/Community garden

Now that some previously unexpected issues and difficulties have been overcome, work on this project can resume. Despite the Powerdown project having ended on March 31st, it is envisaged that the hard standing and raised beds will be installed over the next few weeks to allow some cultivation during the current season and the poly-tunnel completed later in the year.

Community Hall turbines

The foundations have been prepared for all three community hall turbines and the Rousay turbine is up and running. Despite installer scheduling delays with the final installation and commissioning of the Egilsay and Wyre turbines, it is anticipated that these will also be finished and up and running in May.

Kingarly Hill turbine

As most will have noticed, the track to the turbine, joining the public road at Windbreck is now well under way. The construction plan is designed to minimise disruption to transport where possible, but we apologise for any delays and inconvenience in the area over these weeks. It is especially pleasing that the track is being built with local stone and that the contractor has honoured a commitment to use local labour as much as possible. The Trust's subsidiary, REWIRED, is still one document short of reaching financial close for the loan from the Co-operative Bank but we anticipate final "close" in the next couple of weeks.

Rousay Lap

Finally, the 3rd Rousay Lap is to be held, as in previous years, on the last Saturday in August [the 27th]. Further details will be provided in subsequent copies of the *Review*. However, by popular demand, from this year on, entrants will be clearly designated as "Resident" and "All-comers" for best times and prize giving etc., so there's no better excuse to dig out those walking/running shoes or to oil the chain and dust down that bike seat!

Regular updates about the Trust will be posted at the usual communication points including the REWDT web site www.orkneycommunities.co.uk/REWDEVTRUST, community notice boards and the Eynhallow.

Rousay, Egilsay and Wyre Development Trust
is a charitable company limited by guarantee.
Co. Reg. No: SC318527 Charity Reg. No: SC040407
Registered Office: Manse, Rousay, Orkney, KW17 2PR
Telephone: 01856 821229
e-mail: rewdevrust@googlemail.com



Supported by

The National Lottery[®]
through the Big Lottery Fund



Rousay, Egilsay and Wyre Development Trust announce the launch of:

ROUSAY ALLOTMENT ASSOCIATION

A Powerdown Project funded by the Climate Challenge Fund



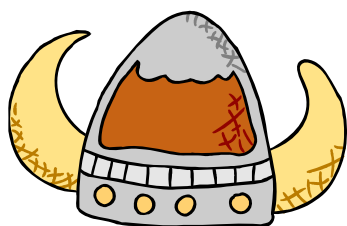
We are sure you will have followed the construction and development of the new allotment site adjacent to Johnstons Road in The Brinian and whilst there is still some “finishing off” to be completed, including the skinning of the polytunnel, we are at last in a position to offer the 16 allotments and 11 polytunnel pitches up for tenancy.

This project was funded by the Climate Challenge Fund to provide space for those residents of the Council and Housing Association houses in The Brinian to grow their own fruit and vegetables, with the aim of reducing food miles. As such, we have approached all the residents of the Pier Houses and Johnstons Road in the first instance, inviting them to apply for an allotment, together with access to the tools and equipment we are able to offer, and/or to reserve a polytunnel pitch.

If there are any allotments or polytunnel pitches spare after the end of April, these will be offered to the wider community on a first-come-first-served basis. Further information and application forms can be obtained Rousay Allotments Association, c/o Rousay Egilsay and Wyre Development Trust, The Manse, Rousay KW17 2PR [or by telephone or e-mail – details on the Trust page in this Review]. If we fill all of the allotments and there is still plenty of interest, a reserve list will be prepared. Residents of the Pier Houses and Johnstons Road who express an interest in either an allotment or a polytunnel pitch after all the plots and pitches have been allocated will automatically be placed at the top of the reserve list.

Members of the community who do not wish to have an allotment will have the opportunity of renting the equipment (including the strimmer or the two wheeled tractor which is a rotovator, a grass cutter, a plough and a tattie furrower and lifter) but they must join the Rousay Allotment Association [initially £5 per annum] in order to do so.

Michelle Koster



Viking Displays

Last year we held a competition for people to make a pony to display at their road end etc., and visitors voted for the winner. This year, the competition will be a **VIKING THEME**, to tie in with the ‘*Storming of Wyre*’ event that is being held this summer.

You can make anything to do with Vikings, using any kinds of materials and items that you can find - be creative!



FOR SALE

Hotpoint Aquarius FDW20 Dishwasher

White; 60cm Free Standing
With Original Instruction Booklet


Used (2-years-old), in excellent condition

£70

Telephone 821 360

For photographs, visit:

www.aroundrousay.co.uk/forsale

<p>Taversoe InnQUIZition</p> <p>Tuesday 3rd May Monthly Fun Quiz Enthusiasm Supper Free Entry Snowball Jackpot</p>	 <p>School & Club Vouchers 2011</p> <p>Rousay School is once again collecting Tesco vouchers for school equipment.</p> <p>Vouchers can be put in the collection box at school reception.</p>
<p>Islands View Surgery Public Holiday Notice</p> <p>The surgery will be closed on the following dates:</p> <p>Friday 29 April Saturday 30 April Monday 2 May</p>	<p>ARCHAEOLOGICAL EXCAVATIONS AT HA'BRECK 2011</p> <p>In 2006, a new Neolithic settlement was discovered in a ploughed field at Ha'Breck, during a archaeological walkover survey of the island undertaken as part of an Orkney Archaeological Trust project.</p> <p>Since 2007, a small team has been involved in excavating this site and to date, they have discovered the remains of five dwellings, all dating to the Neolithic. Unusually, these buildings comprise both timber and stone built constructions. A large assemblage of pottery, stone tools and flint has now been recovered, and forms one of the most significant collections of Early Neolithic domestic material from any site in Scotland.</p> <p>The team from the Orkney Research Centre for Archaeology (ORCA) will be excavating on the site again between 2nd and 20th May 2011 and visitors are welcome to view the work as it progresses. A special Open Afternoon is planned for Saturday 14th May, where there will be guided tours and a chance to see some of the artefacts found during the dig.</p> <p>For more information, contact Antonia Thomas: antonia.thomas@orkney.uhi.ac.uk or call 07824 504700</p>
<p>Cruise Liner Visit</p> <p>Rousay is getting a visit from "<i>The SPIRIT of ADVENTURE</i>", a small liner with a capacity of 350 people on Friday 27 May. She is due to anchor at approximately 7am, and leave at approximately 5.30pm.</p> <p>On the day, there will be an art and craft exhibition in the Heritage Centre. Small gifts, cards, etc. will be for sale in the Craft Shop. If anybody has things to display or for sale, please contact Itha (821 359).</p>	
<p>Mobile Library</p> <p>The Library Van will next be visiting Rousay, Egilsay and Wyre on Thursday 26 May.</p>	<p>The Taversoe</p> <p>Summer Opening Hours</p> <p>Begin Monday May 9th</p> <p>Bar Monday 11am - 5pm Tues - Sat 11am-11pm Sun 12pm-10.30pm</p> <p>Restaurant Monday 12pm-5pm Tues - Sat 12pm - 9pm Sun 12pm-7pm</p> <p>The Bar will close at 9pm if empty</p>
<p>WANTED</p> <p>Small parcel of land</p> <p>Suitable for a child's small pony</p> <p>To purchase or rent</p> <p>Contact Trish on 821 424</p>	

Church Services

in Church Centre
at 11.30am

Sunday 8th May
Martin Prentice

Sunday 15th May
David Fidler

All welcome.

We look forward to a student Minister coming
to stay in Rousay for 6 weeks during June & July.

At the AGM of the Congregation of the Rousay Church in March, members present agreed to linking with the parishes of Evie, Firth & Rendall. An electoral register of the congregation has to be compiled. A list of Communicant members is displayed on the Church Centre door. Any communicant not on this list or anyone wishing to be an adherent (supporter) of the congregation please contact Liz Firth on 821477 by Friday 6th May.

WANTED

Cot Bed with a Mattress (any colour)

Potatoes

Carrots

Parsnips

Geese

Contact Lindsay at Quoys (821 407)

Bishop Visit/Service

The Bishop of Aberdeen & Orkney will be taking a service at St Mary's Chapel, Westness, on Saturday 7 May at 11.30.

All very welcome.



Reminder to Raft Builders!

The date for the

REGATTA

this year is 25 June.

Why not make your raft and outfits a Viking theme,
in preparation for the 'Storming of Wyre' event this summer?

FOR SALE

Toyota RA72 Sewing Machine
RRP £189

New, never been used, but no box.

Comes with Owner Manual
20 Stitch Settings; Electronic Display

£95 O.N.O.

Telephone Trish (821 424) for more info.

Special Collection

There will be a Special Collection of bulk domestic items on Tuesday 17 May.

Items must be booked in advance - telephone Orkney Islands Council (01856 873535).

Thank you!

Thank you to everyone who completed my recent postal questionnaire on *The Taversoe*.

I sent out a total of 133 questionnaires to Rousay residents, of which 77 responded, which is more than enough for me to analyse, and enable me to complete my research project.

Kayleigh

All items for the June 2011 Review should be sent to the
Editor, Kayleigh Tipper, by **Friday 27 May 2011**.

Telephone/Fax: 01856 821 360

E-mail: kayleigh@aroundrousay.co.uk

The Review is printed and published by the **Rousay Community Association**.