

# ROUSAY, EGILSAY & WYRE

# REVIEW



December 2011



Electronic Edition



## Taversoe InnQUIZition



Tuesday December 6th

Free Quiz 8pm  
Snowball Jackpot  
Winter Supper



## Mobile Library

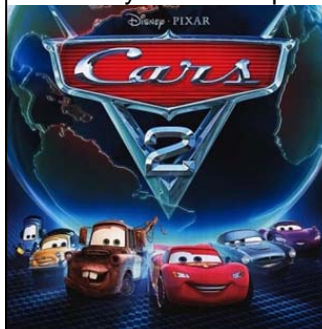
Next visit:  
Thursday 8  
December

## Films

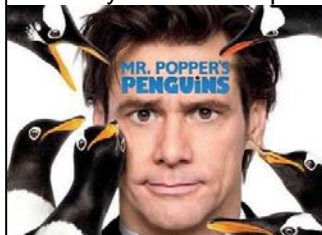
At Rousay School.  
All welcome.



*Rare Exports:  
A Christmas Tale*  
Saturday 10 Dec. 8pm



*Disney Pixar's Cars 2*  
Sunday 11 Dec. 3pm



*Mr. Popper's Penguins*  
Friday 30 Dec. 3pm

## What's On at a Glance

December 2011

**Friday, 2nd.**

Concert, Pier Restaurant, 8pm

**Saturday, 3rd.**

⇒ REWG Community Council Meeting,  
Rousay School, 10.15am  
⇒ Ferry Tariff Review Meeting, School,  
2pm

**Tuesday, 6th.**

⇒ Craft Afternoon  
⇒ The Taversoe InnQUIZition, 8pm

**Thursday, 8th.**

⇒ Mobile Library visits Rousay, Egilsay  
and Wyre

**Saturday, 10th.**

⇒ Church Service, Church Centre,  
11.30am  
⇒ *Rare Exports: A Christmas Tale* Film  
Showing, School, 8pm

**Sunday, 11th.**

⇒ *Cars 2* Film Showing, School, 3pm

**Tuesday, 13th.**

⇒ SWRI Meeting, School, 8pm

**Wednesday, 14th.**

⇒ Secret Santa, The Taversoe, 7.30pm

**Friday, 16th.**

⇒ Christmas Concert, Rousay School

**Saturday, 17th.**

⇒ Advent Service, St. Mary's Chapel,  
Westness, 11.30am

**Saturday, 24th.**

⇒ Christmas Eve Service, Church Centre,  
7.30pm

**Friday, 30th.**

⇒ *Mr. Popper's Penguins* Film Showing,  
Rousay School, 3pm

## Weekly Events:

**Every Monday** [during school term]

⇒ Kickboxing, School, 3.30-4.30pm

**Every Sunday**

⇒ Orkney Poker League, The Taversoe,  
7/7.30pm

## Orkney Ferries Tariff Review Meeting

You are invited to a public meeting as part of the consultation on proposals for changes to Orkney Ferries' tariff scheme.

The meeting will be held on Saturday 3 December, 1400 hrs, in the Community School Hall.

Further information on the Tariff Review can be found at [www.orkney.gov.uk](http://www.orkney.gov.uk)

The tariff options have been published on 17 October for a nine-week period to 16 December before being reported back to the Council's Transport and Infrastructure Committee in February 2012.

Hard copies of the 'Review of Orkney Ferries Tariff Scheme: Report by The Spyria Partnership' is available to view at the Egilsay, Wyre and Rousay Post Offices and at Marion's Shop. Hard copies of the questionnaire are available from all these venues.

## Islands Brochure

The Rousay, Egilsay and Wyre section of the Islands Brochure is in the process of being amended/updated. This brochure is extremely popular and a valuable source of information on places of interest, accommodation, ferry details etc. If you already advertise in the brochure and would like to amend your details or be added to it, the Clerk needs to have your details etc. by the 29/11/11. Contact Diana at email: [rewgcc@btinternet.com](mailto:rewgcc@btinternet.com)

## Concert

Friday 2nd December  
8pm

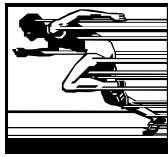
Pier Restaurant

With Ivan Drever

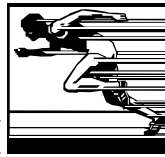
£5 Admission  
All welcome.

# ROUSAY HEALTHY LIVING CENTRE

## THE RACE TO LAPLAND WINTER CHALLENGE



**GYM V GYM**



ROUSAY Healthy Living Centre has been challenged to race the other Orkney Healthy Living Centres to **LAPLAND!**  
A total distance of 1162 miles!

or

116200 calories

Each mile must be travelled by burning 100 calories

### BURN THE MOST CALORIES!

You are invited to take part in the RACE TO LAPLAND which started on **SATURDAY 26<sup>TH</sup> NOVEMBER 2011** and will finish on Friday 23<sup>rd</sup> December 2011.

The Challenge is to determine which Healthy Living Centre can reach Lapland first by finding out who can burn off the most calories in a set time frame.

100 calories equals 1 mile.

Every cardiovascular machine has the capacity to monitor calories. We would like to ask you to monitor how many calories you burn on each machine that you use and record this in our calorie log sheet on the desk.

Can we reproduce the success we had in 2009?

**WIN?**

SWRI



Tuesday 13th Dec, 8 o'clock

Christmas nibbles, games & quizzes & a visit from Santa!

Competitions:

1. Home made Christmas Card
2. Bring a friend

Come along & join the SWRI or just come along

### FOR SALE

Rousay School Parent Council have 100 x 1m<sup>2</sup> rubber mats from the old playpark for sale.

Available individually or as a job lot.

Anyone interested please contact Zoë on 821 454.



### Service for Advent

At St Mary's Chapel, Westness,  
Saturday 17 December at 11.30am.

All welcome.

### Healthy Living Centre Supervised Sessions

Mon 7pm-9pm  
Tue 7pm-9pm  
Thurs 7pm-9pm  
Sat 4pm-5pm

Buddy system 7am- 5:30pm  
Weekdays, school term.

Contact: Jo Inkster 821200 Paddy Maguire 821234  
E-mail: [rousay.hlc@glow.orkneyschools.org.uk](mailto:rousay.hlc@glow.orkneyschools.org.uk)



### Secret Santa



Wednesday December 14th, The Taversoe @ 7.30pm

Eggnog, Mulled Wine, & Christmas Nibbles  
And Bob in his Christmas Hat!

### Rousay School Christmas Concert

On Friday 16 December.  
All welcome.

### Merry Christmas

To everyone on  
Rousay, Egilsay and  
Wyre, From Corse

### Community Council Meeting

The Rousay, Egilsay, Wyre & Gairsay Community Council meet on Saturday, 3 December 2011 at 10.15 a.m. in the GP room at the Rousay Community School. Members of the public are welcome to attend and view the proceedings.

### Informal Craft Afternoon

Tuesday 6th, Finishing off afternoon  
Any suggestions of crafts for next session please call Shelagh 821 283 or Liz 821 477.

We won't be sending Christmas Cards this year, but will make a donation to charity instead.

## Ambulance News

Since April 2011, the Scottish Ambulance Service has been responsible for providing ambulance cover for Rousay, Egilsay and Wyre. This role was formerly undertaken by NHS Orkney.

In addition to providing our ambulance vehicle, the Scottish Ambulance Service is seeking to enhance the level of emergency care available to island residents by offering our volunteer drivers "First Person On Scene" (FPOS) training. This nationally recognised qualification provides volunteers with the knowledge, skills and experience required to provide basic but potentially life saving care to people who are seriously unwell or who have major injuries. As well as participating in training, FPOS volunteers undergo regular assessment in order to help them to maintain a high standard of care. Our FPOS volunteers have also started to work with our new GP (Richard Brunt) and our District Nurse (Ingrid Murray) to put their skills to the test by dealing with simulated medical emergencies and trauma during regular evening practice sessions.

So far, four volunteer ambulance drivers (Joseph Hewes, Patrick Maguire, Nick Beale and Matt Wigley) have completed their initial First Person On Scene training and are available to assist the on-call doctor or nurse with medical emergencies on Rousay, Egilsay and Wyre. The volunteers work in pairs according to a 24 hour on-call rota and are contacted by Ambulance Control in Inverness following any 999 calls from island residents. The on-call doctor or nurse is alerted by Ambulance Control simultaneously. This dual response ensures that the doctor or nurse always receives the support of two trained assistants with a well equipped ambulance in the event of a medical emergency on any of the three islands.

In order to respond to 999 calls as quickly as possible, one of the volunteer drivers must keep the ambulance with them at all times and will therefore be seen driving it about the island on a day-to-day basis. This also ensures that the vehicle and the equipment inside is regularly checked, maintained and kept in working order. **Please be prepared to give way if you see the ambulance approaching: it may be responding to an emergency.**

Further FPOS training is expected to take place soon for some of our other volunteer ambulance drivers. We are always looking for new volunteers who are keen to support our community by providing immediate and effective care to unwell or injured neighbours, family members and friends. If you would like to find out more, please speak to Joseph, Patrick, Nick or Matt or contact Richard Brunt or Ingrid Murray at Islands View Surgery.

**Remember: ALWAYS phone 999 and ask for the ambulance in a medical emergency.** This makes sure that the doctor or nurse AND the ambulance crew arrive as quickly as possible by avoiding unnecessary delays and multiple telephone calls.

### Telecare Services

Orkney Islands Council is considering introducing a charge for Telecare Services, including Community Care Alarms. OIC has distributed forms detailing what this might mean for the people who use the service, and how you can give your views. Service users should already be in receipt of these forms and if you would like to participate please go to the Council Website at [www.orkney.gov.uk](http://www.orkney.gov.uk) or email [telecare@orkney.gov.uk](mailto:telecare@orkney.gov.uk) who will send an email return version or obtain a hard copy from Marion's Shop. The cut-off date is 4 January 2012.

### FOR SALE

New without box never been worn, Girls Nike max 90 trainers pink and white. Size 9. Bought them and too small.

£10 no offers  
Call Lindsay 821407

### WANTED

Old 100%  
Wool Jumpers

Contact Freida at the  
School (821 226).

### Local Housing Strategy

Orkney Islands Council is developing a new Local Housing Strategy which will cover the five year period from now until 2016. They wish to consult with people all over Orkney and if you would like to participate please go on line to [www.orkney.gov.uk](http://www.orkney.gov.uk) an on-line survey form will also be available. Hard copies can be obtained from John Richards on 01856 873535 or email him at: [john.richards@orkney.gov.uk](mailto:john.richards@orkney.gov.uk) Closing date for this is the 31 December 2011.

### FREE TO GOOD HOME

Friendly, 6-month-old castrated Collie called "Charlie", looking for a good home.

Contact Thomas 07593 354 652  
or Cruannie 821 383

### Church Service

At the Church Centre  
Sat 10th Dec,  
11.30am

Martin Prentice

All Welcome

### Rousay Horticultural Society Show 2012

The 2012 Show will take place on Saturday 4<sup>th</sup> of August and, for those who like to get busy making things over winter, schedules will soon be on sale from the Shop and the Restaurant, price 20p. They will also be available to download at [www.aroundrousay.co.uk](http://www.aroundrousay.co.uk) Seed tatties for the tattie-in-a-bucket competition will be available as usual in spring, so watch out for notices then.

### Christmas Eve Service

24th Dec. 7.30 pm  
Church Centre

Service of  
Readings & Carols

All Welcome



# Lindsay's

## Christmas Treats



Large Choc Heart  
Choose from Milk Choc or White Choc  
£3.50

Mini Chocs  
Choice of Stars, Trees, Small Hearts, or Bears  
6 Chocs in a little gift wrap, with a choice of red or gold ribbon.  
£2 each

Fudge Bites, Choc and Raisin, 6 Bites £2  
Peanut butter Crispies 6 Bites £2

When ordering, please let me know if you would like red or gold ribbon



Name and phone number required  
Please give me 48 hours' notice, thanks



Contact Lindsay, Quoys, 821 407

### FOR SALE

Thomas' Ford Fiesta MOT'd till March

£150

Tel. Cruannie 821383

### WANTED

Old bath or similar to make a duck pond.

### AND

Small out board engine up to 5hp.

Richard (Quoyostry)

Tel. 821 424

### FOR SALE

30 Bales of last year's Silage

£12 each

Tel. Bigland (821 244)

## The Taversoe

*Christmas and  
New Year 2011  
Menus & Events*



### Christmas Opening Hours

Friday 23rd	Open as Usual	11am-2pm/5pm-11pm
Saturday 24th	Open as Usual	11am-12 midnight
Sunday 25th (Christmas Day)	Possible Limited Opening	
Monday 26th	Closed	
Tuesday 27th	Closed	
Wednesday 28th	Open as Usual	11am-2pm/5pm-11pm
Thursday 29th	Open as Usual	11am-2pm/5pm-11pm
Friday 30th	Open as Usual	11am-2pm/5pm-11pm
Saturday (NYE)	Open as Usual	11am-12 midnight
Sunday (New Years Day)	Closed	
Monday 2nd Jan	Closed	
Tuesday 3rd Jan	Closed	
Wednesday 4th Jan	Open as Usual	11am-2pm/5pm-11pm
Thursday 5th	Standard Winter Opening Hours Commence	

### Christmas Menu

If you would like to book a Christmas meal in December we are now taking bookings. Please pop in to The Taversoe for a copy of this year's Menu.

Merry Christmas, 01856 821 325

### Christmas Day Opening

We are looking into the possibility of opening for lunch on Christmas Day. This would be subject to interest. If you would like to know more please give us a ring or stop by. 01856 821 325

As we will not be sending any local Christmas Cards this year, **Corinne and Stewart** would like to wish everyone

## Season's Greetings

*From all at Bigland.*

We will also make a donation to the Triangle Club.

### Local Christmas Card Deliveries

The Triangle Club will be delivering Christmas Cards again this year.

Collection boxes will be at various places on Rousay.

All cards handed in by **Wednesday 21 December** will be delivered before Christmas.

Donations to The Triangle Club.



Keep up-to-date with the latest local events, at



[www.facebook.com/AroundRousay](http://www.facebook.com/AroundRousay)

All items for the January 2012 Review should be sent to The Editor, Kayleigh Tipper, by

**Tuesday 27 December 2011, 5pm.**

Telephone/Fax: 01856 821 360  
E-mail: [kayleigh@aroundrousay.co.uk](mailto:kayleigh@aroundrousay.co.uk)

*The Review is printed and published by the  
Rousay Community Association*